



ihcDirect Antibodies and Reagents

ihcDirect assays registered for use as *in vitro* diagnostic tests are now available in two formats: as test kits with the essential components included and now as flexible separate components.

Antibody Test Kits & Antibodies and Ancillary Reagents

Monoclonal Antibodies (Anti-Human Clones)	Catalog Number	-005 (5ml)	-010 (10ml)	-015 (15ml)	-030 (30ml)
AE1/AE3 (Mouse, AE1/AE3)	K31007-	Ab Only	Ab Only		
Calponin (Mouse, C126)	K41026-	Kit	Kit		
CD20 (Rabbit, R272)	K32029-	Ab Only	Ab Only		
CD45 (Mouse, C95)	K31010-	Ab Only	Ab Only	Ab Only	
CEA (Mouse, C135)	K31038-	Ab Only	Ab Only		
CK5 (Rabbit, R226)	K42014-	Kit	Kit		
CK7 (Rabbit, R284)	K42015-	Kit	Kit		
CK 8/18 (Mouse, C94)	K41001-	Kit	Kit		
Pan-CK 4Abs (Mouse AE1/AE3, C94, Rabbit R226)	K41058- K31058-	Kit ---	Kit ---	Ab Only	
EMA (MUC1), (Mouse, C137)	K31040-	Ab Only	Ab Only		
Ki67 (Rabbit, R360)	K32001-	Ab Only	Ab Only		
GFAP (Rabbit, R246)	K42002-	Kit	Kit		
Mart-1 (Mouse, A103)	K41009-	Kit	Kit		Kit
Podoplanin (Mouse, C125)	K41025-	Kit	Kit		
SMMHC (Mouse, SMMS-1)	K41024-	Kit	Kit		
Vimentin (Rabbit, R289)	K32021-	Ab Only	Ab Only		
Ancillary Reagents					
DAB Kit (ihc DAB Chrom)	K50001-	kit only	kit only	x	x
ihc DAB 1:1 Kit (ihc DAB Chrom)	K50002-			x	x
Ihc Blocker CE Mark	K51001-	kit only	kit only	x	
ihc Blocker (USA)	K51002-	NA	NA	x	
ihc Wash Buffer Kit (USA)	K52001-	800 ml mixes to 8L			

IHC Tissue Tests/Package Est.

- 005 ~ 50 Tissues/bottle
- 010 ~ 100 Tissues/bottle
- 015 ~ 150 Tissue/bottle
- 030 ~ 300 Tissues/bottle

Distributed by:

ImTec

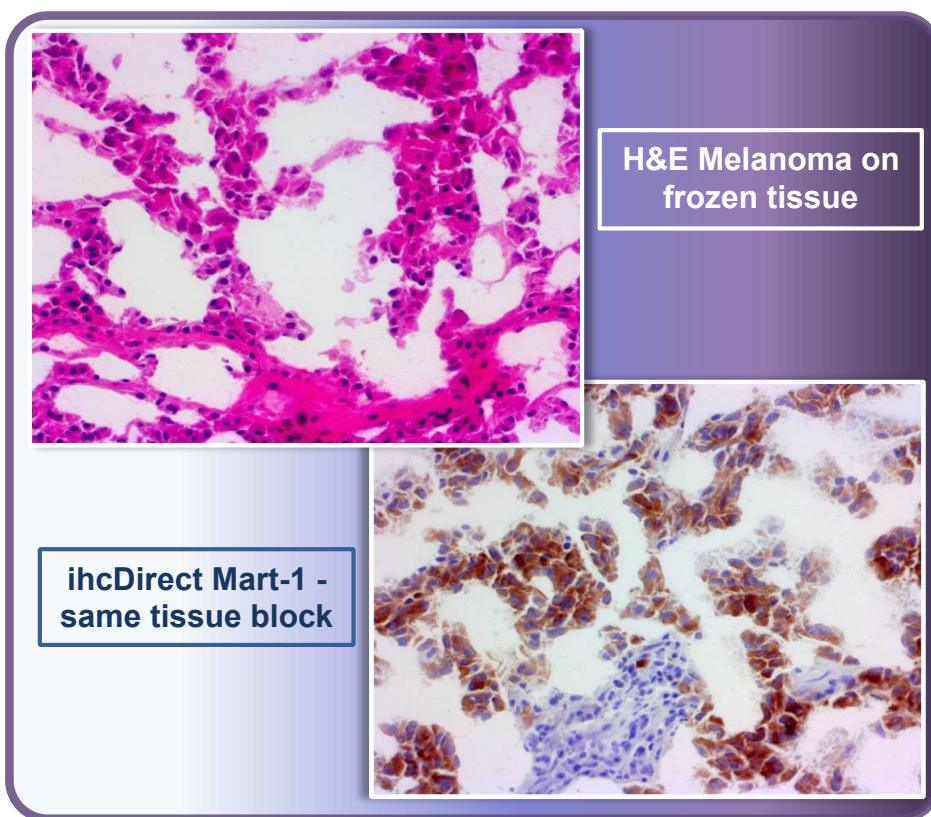
DIAGNOSTICS NV

Contact: info@imtec.be | +32(0)3-2251139

10-Minute ihcDirect® IHC Assays for IVD

ihcDirect is a novel 10-Minute immunohistochemistry (IHC) technology for intraoperative observation of important biomarkers on frozen tissues. ihcDirect tests are intended for *in vitro* diagnostic (IVD) use.

Assays are crafted by conjugating primary antibodies (abs) directly onto polymerized HRP enzymes, eliminating the need for secondary abs. This greatly enhances performance via simplified test protocols and faster turn-around times while maintaining the sensitivity of IHC assays. See our simplified frozen and FFPE tissue procedures!



ihcDirect Frozen Tissue Procedure	Time in mins.
Fixation	Start
Wash (PBS-T) remove excess	
Blocking remove excess	1
ihcDirect pHRP Ab conjugate	3
Wash (PBS-T) remove excess	
DAB (working solution)	1-3
Wash	
Counter Stain	1-20 sec
Wash/Dehydrate/Mounting Media/Coverslip	User Det
Total	<10

Simplicity of an H&E with the Sensitivity of an IHC...

