

Purified *In vivo* Grade Antibodies

Leinco's GOLD™ & PLATINUM™ Purity Standards

Leinco Technologies has developed proprietary methods for manufacturing *In vivo* functional grade antibodies with the highest purity standards in the industry. Leinco's *In vivo* Platinum™ antibodies have the most stringent quality specifications for purity, endotoxins, aggregates and leachable protein A. Each antibody is available in custom concentrations and package sizes. *In vivo* Platinum™ antibodies are also pathogen free and tested by the IDEXXImpact I PCR mouse pathogen profile.

GOLD™



- Purity, > 95%
- Endotoxin, ≤ 1.0 EU/mg
- Contains no preservatives or carrier proteins
- Sterile PBS Ph 7.2 - No K or Ca
- For highly sensitive assays where large amounts of antibody are needed.

PLATINUM™

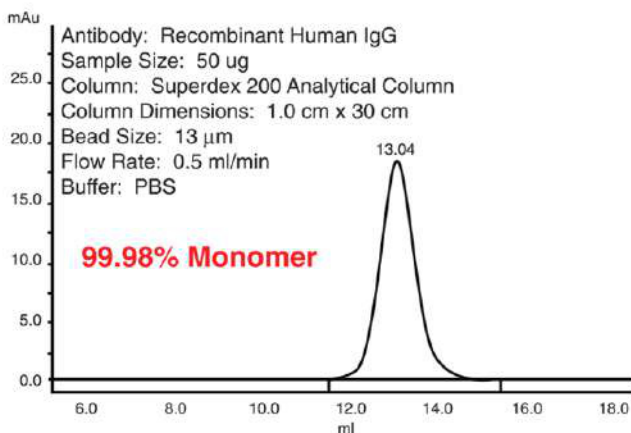


- Purity, > 98%
- Very low endotoxin, ≤ .05 EU/mg
- Contains no preservatives or carrier proteins
- Sterile PBS Ph 7.2 - No K or Ca
- Ultra-low levels of leached protein A
- Pathogen tested. (IMPACT1)

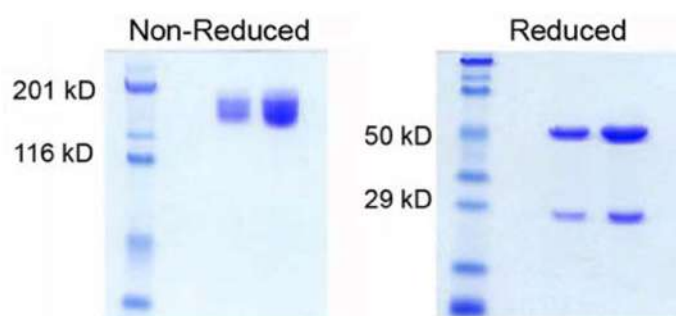
IDEXXIMPACTI (PCR-based) Mouse Pathogen Profile

| | | |
|---|--|--------------------------------|
| <i>Mycoplasma spp.</i> | Mouse adenovirus (MAV1, MAV2) | Mouse kidney parvovirus (MKPV) |
| <i>Mycoplasma pulmonis</i> | Murine norovirus (MNV) | Hantaan virus |
| Sendai virus | Reovirus 3 (REO3) | Mouse cytomegalovirus (MCMV) |
| Mouse hepatitis virus (MHV) | Mouse rotavirus | K virus |
| Pneumonia virus of mice (PVM) | Ectromelia virus | Mouse thymic virus (MTV) |
| Minute virus of mice (MVM) | Lymphocytic choriomeningitis virus | <i>Corynebacterium bovis</i> |
| Mouse parvovirus (MPV1-5) | Polyomavirus | <i>Corynebacterium spp.</i> |
| Theiler's murine encephalomyelitis (TMEV) | Lactate dehydrogenase-elevating virus (LDEV) | |

Determination of Percentage Aggregates Using Analytical Size Exclusion Chromatography



Determination of Purity by SDS-PAGE



Purified Bulk *In vivo* Grade Antibodies

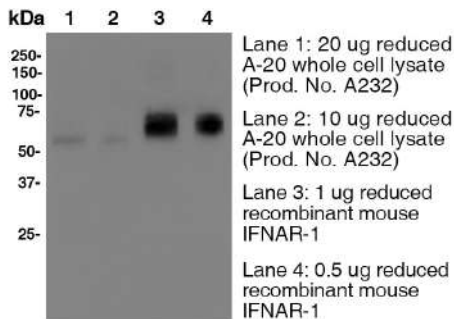
| Isotype Controls | Host Species | Clone |
|-----------------------|------------------|---------------------|
| IgG1 Isotype Control | Human | MOPC21 |
| IgG Isotype Control | Armenian Hamster | PIP |
| IgG1 Isotype Control | Mouse, Rat | HKSP, HKSP84, GL113 |
| IgG2a Isotype Control | Mouse, Rat | C1.18.4, 1-1 |
| IgG2b Isotype Control | Mouse, Rat | MPC-11, 1-2 |
| IgG3 Isotype Control | Mouse | MG3-35 |

| Antigen | Reactivity | Clone | Applications |
|----------------------------------|--------------|---------------------|---------------------------|
| 4-1BB (CD137) | Mouse | 3H3 | Costim |
| B220 (CD45R) | Mouse | RA3-6B2 | Depletion |
| CD11a | Human | 38 | FC, IF, IHC-F, IP |
| CD11a (LFA-1a) | Mouse | FD441.8 | N |
| CD11a (LFA-1a) | Mouse | I21/7 | FC, FA |
| CD11b | Mouse/Human | M1/70 | FC, N |
| CD11b | Human | ICRF44 | FC, B, IHC, IF, CyTOF |
| CD11c | Human | 3.9 | FC, B, IHC, CyTOF |
| CD11c | Mouse | N418 | FC, IP, IHC, CyTOF |
| CD120a (TNFR1) | Mouse | 55R-170 | FC, B, ELISA, IP |
| CD120a (TNFR1) | Mouse | 55R-593 | FC, B, IP |
| CD14 | Human | UCHM-1 | FC, WB |
| CD151 | Human | 50-6 | FC, B, ICC, WB, CyTOF |
| CD155 (PVR) | Mouse | 4.24 | FC |
| CD16/32 | Mouse | 2.4G2 | B |
| CD172a | Mouse | P84 | FC, B IHC FF, IP |
| CD178 (FasL) | Mouse | MFL3 | FC, B IHC FFPE, FA |
| CD18 | Mouse | C71/16 | FC |
| CD19 | Mouse | 1D3 | FC, Depletion, N |
| CD2 | Human | G11 | FC, Costim, IHC FFPE, WB |
| CD20 | Human/Monkey | 2H7 | FC, Depletion, IHC FF, IP |
| CD209b (SIGN-R1) | Mouse | 22D1 | FC, B, IHC FF, WB |
| CD22 | Mouse | Cy34.1 | FC, IP |
| CD24 | Mouse | R7129.7 | FC |
| CD25 (IL-2Ra) | Mouse | PC-61.5.3 | FC, Depletion |
| CD25 (IL-2Ra) | Human | 7G7B6 | IP, IF |
| CD28 | Mouse | 37.51 | FC, B, IP, Costim, IHC FF |
| CD28 | Human/Monkey | CD28.2 | FC, IHC FF |
| CD3 | Human | UCHT-1 (Leu-4) (T3) | FC, Depletion |
| CD325 | Human | 8C11 | FC, ICC, WB |
| CD38 | Human | OKT-10 | FC |
| CD3e | Mouse | 145-2C11 | FC, WB, IF, Depletion |
| CD3e | Mouse | 500A2 | FC, B, IHC FF |
| CD3eF(ab') ₂ fragment | Mouse | 145-2C11 Fab Frag. | Depletion |
| CD4 | Mouse | GK1.5 | FC, WB, Depletion |
| CD4 | Human | OKT-4 | FC, IP, Depletion |
| CD4 | Mouse | YTS 191 | FC, WB, Depletion |
| CD4 | Human | RPA-T4 | FC, IHC FF, IF, Act |
| CD40 | Mouse | FGK4.5/FGK45 | Act |
| CD40 | Human | G28.5 | FC, FA |
| CD44 | Mouse/Human | IM7 | FC, ELISA, IHC, IP, CyTOF |
| CD45 | Human | BC8 | FA |

| Antigen | Reactivity | Clone | Applications |
|--|-------------|--------------|---|
| CD45 | Mouse | I3/2.3 | FC, IHC FFPE, IHC FF |
| CD45R | Mouse/Human | RA3-6B2 | Depletion |
| CD47 | Human | B6H12 | FC, N |
| CD54 (ICAM-1) | Mouse | YN1/1.7.4 | N |
| CD54 (ICAM-1) | Mouse | BE29G1 | B, IP, WB |
| CD54 (ICAM-1) | Human | 15.2 | FC, IHC FFPE, IP, WB |
| CD62L | Mouse | Mel-14 | N |
| CD62L | Human | DREG56 | FC, B, WB |
| CD64 | Human | 10.1 | FC, IHC FF, B |
| CD7 | Human | T3-3A1 | FC, IF Staining |
| CD70 | Mouse | TAN 1-7 | FC, B, ELISA, FA, IF |
| CD71 | Human | T56/14 | FC, IHC FF, WB |
| CD71 (TfR1) | Mouse | R17217.1.4 | FC, Depletion |
| CD8 | Human | UCHT-4 | FC, WB, FA |
| CD80 (B7-1) | Mouse | 16-10A1 | FC, B |
| CD86 (B7-2) | Mouse | GL-1 | FC, B |
| CD8a | Mouse | 53-6.7 | FC, WB, IF, Depletion |
| CD8a | Mouse | 2.43 | WB, Depletion |
| CD8a | Mouse | YTS-169 | WB, Depletion |
| CD8b (Lyt 3.2) | Mouse | 53-5.8 | IF, Depletion |
| CDCP1 (CD318) | Human/Mouse | 9A2 | FC |
| CLEC9A (CD370) | Mouse | 1F6 | FC |
| CSF1R (CD115) | Mouse | AFS98 | FC, Depletion |
| CTLA-4 (CD152) | Mouse | UC10-4F10-11 | FC, WB, N |
| CTLA-4 (CD152) | Mouse | 9H10 | WB, N |
| CTLA-4 (CD152) | Mouse | 9D9 | WB, N |
| Dendritic Cells | Mouse | 33D1 | FC, ICC, IHC FF |
| EGFR | Human | EGFR1 | FC, IFC, N, IP |
| Fibulin-4 | Human | 5G11 | IF Microscopy, IF Staining, IFCFFPE, WB |
| GM-CSF | Mouse | MP1-22E9 | FC, N |
| H-2b | Mouse | B8-24-3 | FA |
| HD5 (Alpha Defensin-5) | Human | 8C8 | IHC, WB |
| Hepsin | Human | 3H10.1 | FC, ELISA |
| Hepsin | Human | 2D5 | FC, WB, ELISA |
| HLA-DP | Human | B7/21 | FC, WB, B, IF |
| HLA-DQ | Human | 1a3 | FC, WB, B |
| HLA, A2 | Human | BB7.6 | FC |
| ICOS | Mouse | 7E.17G9 | FC, B |
| IFN α | Mouse | TIF-3C5 | B, WB, FA |
| IFNAR-1 | Mouse | MAR1-5A3 | WB, B |
| IFN β | Mouse | HDb-4A7 | B, WB, FA |
| IFN β | Mouse | MIB-5E9.1 | WB, N, IP |
| IFN γ | Mouse | H22 | WB, N, IP |
| IFN γ | Mouse | XMG1.2 | FC, WB, N, ELISPOT |
| IFN γ RaChain (CD119) | Human | GIR-208 | B, IPP, IHC |
| IgG FcSpecific | Human | HP6043 | FC, ELISA |
| IgM u-Chain Specific | Human | HB57 | FC, ELISA |
| IL-1a | Mouse | ALF-161 | N |
| IL-1b | Mouse | B122 | ELISA, N |
| IL-1R (CD121a) | Mouse | JAMA-147 | FC, B, IP |
| IL-2 | Mouse | S4B6-1 | N |
| Integrin b7 | Human/Mouse | FIB504 | FC, WB, B, IP, CyTOF |
| LAG-3 (CD223) | Mouse | C9B7W | FC, WB, N |
| LPAM-1 (Integrin α 4 β 7) | Mouse | DATK32 | FC, N |

| Antigen | Reactivity | Clone | Applications |
|--|--|----------------|-------------------------------------|
| Ly6C | Mouse | 7B10 | WB |
| Ly6C | Mouse | HK1.4 | FC, IHC FF, CyTOF |
| Ly6G | Mouse | 1A8 | FC, IHC FF, IHC FFPE, IF, Depletion |
| Ly6G/Ly6C (Gr-1) | Mouse | RB6-8C5 | FC, Depletion |
| MHC Class I (H-2Kb) | Mouse | Y-3 | FC, FA |
| MHC Class I (HLA-A, HLA-B, HLA-C) | Human | W6/32 | FA |
| MHC Class I H2-Kd | Mouse | A4C8.1-Do9 | FC, B |
| MHC Class II (HLA-DR) | Human/Monkey | L243 | FC |
| MHC Class II (I-Ek/RT1-D) | Mouse/Rat | 14-4-45 (HB32) | FC, B |
| NK1.1 | Mouse | PK136 | FC, Depletion |
| PD-1 (CD279) | Mouse | RMP1-14 | WB, B |
| PD-1 (CD279) | Mouse | 29F.1A12 | FC, WB, B, IHC FF |
| PD-L1 (B7-H1) | Mouse | 10F.9G2 | FC, WB, IF, B, IHC FF |
| PD-L2 (B7-DC, CD273) | Human | 3.2 | WB, FA |
| PD-L2 (B7-DC) | Mouse | TY25 | FC, B, IHC FF |
| RANKL (CD254) | Mouse | IK22/5 | B |
| RNase L | Mouse | 2e9 | ELISA, IHC FFPE, IP, WB |
| TCRV α 24-J α 18 (iNKT cell) | Human | 6B11 | FC, WB, CyTOF |
| TCR γ /d | Mouse | UC7-13D5 | FC, N, IP, FA |
| TGF- β | Mouse/Human/Rat/Monkey/ Hamster/Canine/Bovine | 1D11.16.8 | WB, N |
| Thy1 (CD90) | Mouse | HK2.1 | WB, FA |
| Thy1 (CD90) | Mouse | T24/31 | Depletion |
| Thy1.2 (CD90.2) | Mouse | 30H12 | WB, Depletion |
| TIM-3 (CD366) | Mouse | RMT3-23 | FC, N |
| TNF α | Mouse/Rat/Rabbit | TN3-19.12 | FC, N |
| TNFR2 (CD120b) | Mouse | TR75-54.7 | B |
| VISTA | Mouse | 13F3 | FC |
| V γ 2 TCR | Mouse | UC3-10A6 | FC, Depletion |
| YB-1 | Human | 21A3 | WB, IHC FFPE |

IFNAR-1 (Clone MAR1-5A3)

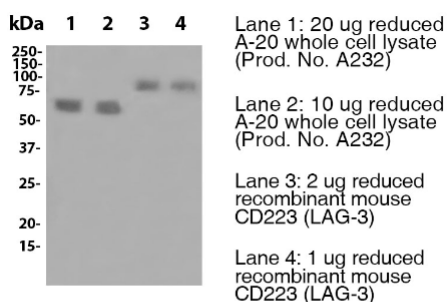


Primary: anti-mouse IFNAR-1 antibody (MAR1-5A3) at 8 μ g/ml (Prod. No. I-401)

Secondary: HRP labeled goat anti-mouse at 1:1000 dilution (Prod. No. M114)

Predicted band size: 60-70 kDa

LAG-3 (Clone C9B7W)

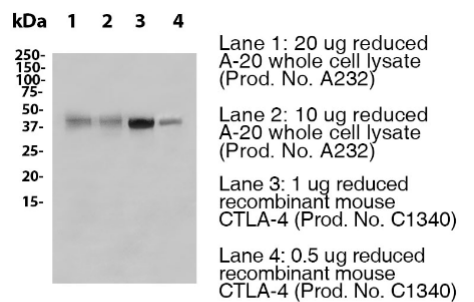


Primary: anti-mouse CD223 (LAG-3) antibody (C9B7W) at 8 μ g/ml (Prod. No. L306)

Secondary: HRP labeled goat anti-rat at 1:1000 dilution (Prod. No. R1215)

Predicted band size: 70-90 kDa

CTLA-4 (Clone 9H10)



Primary: anti-mouse CTLA-4 antibody (9H10) at 8 μ g/ml (Prod. No. C1614)

Secondary: HRP labeled goat anti-syrian hamster at 1:1000 dilution (Prod. No. S221)

Predicted band size: 33-43 kDa

Over 100 antibodies available in 1 mg, 5 mg, 25 mg, 50 mg, 100 mg sizes.

Bulk sizes available upon request (500 mg, 1 g + sizes).

Custom concentration & custom packaging available upon request!