

Important Note: If printing pages, make sure to do so at **100%** so the real-size layouts on pages 5 & 6 will be accurate. **Do not** 'fit to page'!

GenHunter[®] Corporation

PerfectWestern[®] Product Line

*Containers, Membranes, Film,
Shakers, Pipettors, Agarose*

PerfectWestern® Containers from GenHunter

Beautiful Western Blots, While Saving Money on Antibodies and Other Reagents.

These specially designed containers perfectly fit Western blots of different size, including whole blots, half blots, and strips. They come in 37 different sizes in both clear and black plastic as well as 6 transparent colors.

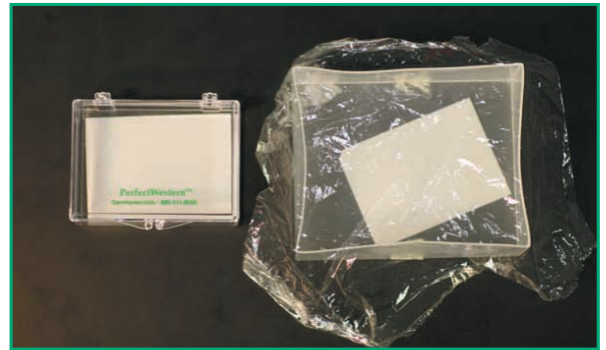
These containers were conceived by our own frustration in searching for suitable containers for Western blots. The choices were often much too large and never flat enough, causing waste of antibody and concern about scratching the membrane. So we designed our own containers offering many different sizes and options to truly achieve a PerfectWestern®.

Features:

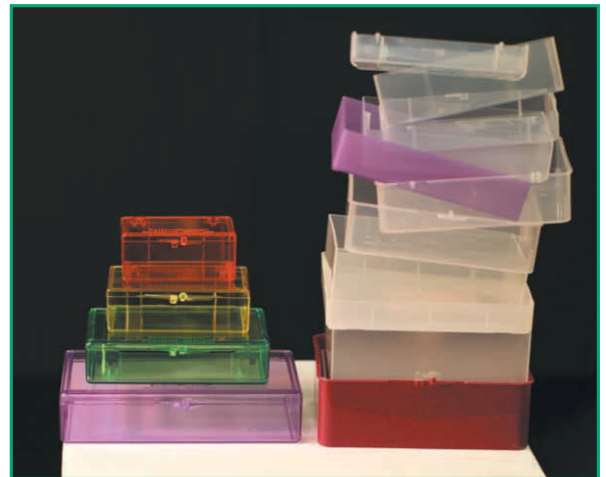
- Ultra-smooth flat inner surfaces
- Lids to minimize evaporation & fume exposure
- 90° edges for excellent membrane movement
- Stable up to at least 70° C for stripping, etc.
- 37 sizes - a perfect size for any gel
- Made in the U.S.A.

Save up to 75% on Antibodies & Reagents!

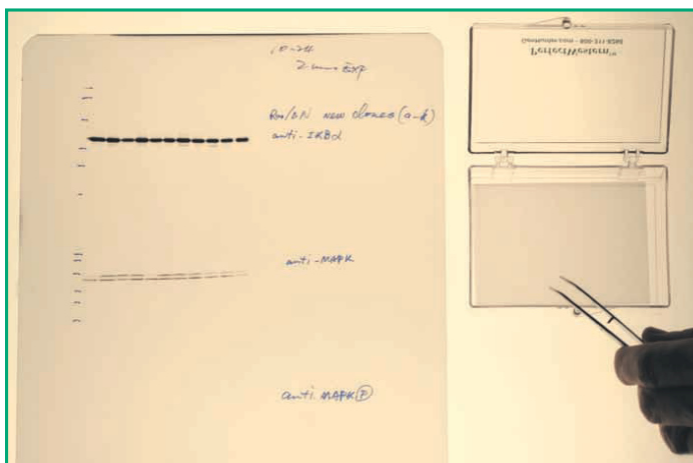
Because of these features, the volume needed for all Western blotting steps is dramatically reduced, often up to 75%, saving money on antibodies and other reagents.



**Much better than pipet tip lids
Reduce Antibody usage by 75%!**



Organize your lab and save money



Beautiful Western blots every time



Easy visualization of staining

Perfectly Flat, Perfectly Sized = PerfectWestern®

37 Different Sized PerfectWestern® Containers Now Available

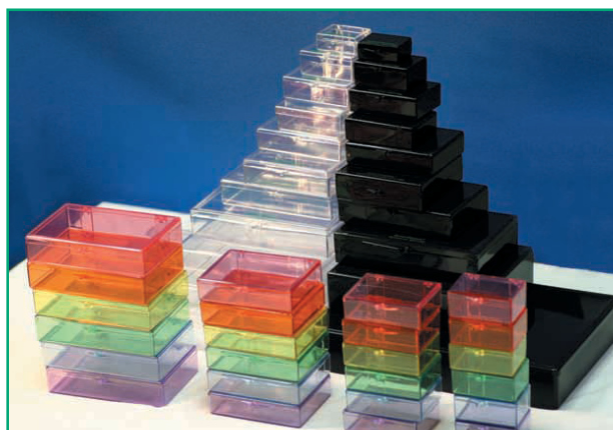
Which PerfectWestern® Container fits your Gel System?

For the easiest answer, consult the [Actual Sizes](#) layout on pages 14 & 15.

Gel Manufacturer	Our Container	Cat. No.
Biometra (formerly from Invitrogen)		
Mini-V 8□10	Medium	B101
V15□17 Vert. Gel. Elect.	Jumbo/Enormo	B138/B111
V16 or V16-2	Jumbo/Enormo	B138/B111
Maxigel	Enormo/Colosso/2D Tray	B111/B140/B142
Bio-Rad Systems		
Mini-PROTEAN 3	Medium	B101
Criterion Precast	Extra Large	B109
PROTEANII xi, 16cm	Jumbo/Enormo	B138/B111
PROTEANII xi, 20cm	Enormo	B111
PROTEANII XL, 20cm	Enormo/Colosso/2D Tray	B111/B140/B142
PROTEAN Plus	Colosso/2D Tray	B140/B142
GE Healthcare / Hoefer (formerly Amersham)		
Mighty Small SE250	Medium/Mini Square	B101/B144
Mighty Small SE260	Mini Square/Large	B144/B107
miniVE Vert. Gel Elect.(SE300)	Large/Square	B107/B119
SE600/SE400 (18 x 8)	Mini Doublewide/ExtraLarge	B136/B109
SE600/SE400 (18 x 16)	Jumbo/Enormo	B138/B111
SE640 (18 x 8)	Mini Doublewide	B136
SE660 (24 x 18)	Multi-Wide/Colosso/2D Tray	B148/B140/B142
Ettan Dalt II/six/twelve (2D gel)	Colosso/2D Tray	B140/B142
Multiphor II, Excel 2D 12.5	Multi-Wide	B148
Multiphor II, Excel XL 12-14	Colosso/2D Tray	B140/B142
Invitrogen / Novex		
Novex XCell SureLockMini	Mini Square	B144
Novex XCell SureLockMidi	Extra Large	B109
E-PAGE Gels	Extra Large	B109
Lonza (formerly Cambrex/FMC/BMA)		
PAGEr Gold Precast(8.3 x 7.1)	Medium	B101
PAGEr Gold Precast(8.3 x 8.1)	Mini Square	B144
Owl Systems		
Puffin P81	Large/Square	B107/B119
Penguin P8DS	Large/Square	B107/B119
Penguin P9DS	Jumbo/Enormo	B138/B111
Penguin P10DS	Enormo/Colosso/2D Tray	B111/B140/B142
Important Notes 1) All above catalog numbers are given for the clear version. If black or colored versions are desired, check on catalog number. 2) The above recommendations are not guaranteed to be correct. Please check the exact size of gels from your apparatus and compare it to the PerfectWestern® container (inside dimensions are given) or real-size layout (pages 14-15) to be sure.		

Most of the 37 containers come in both clear and opaque black versions. The clear container allows easy visualization of the blot, whereas the black version keeps light-sensitive reagents protected.

In addition, 4 of our most popular sizes (Small, Medium, Large, and Extra Large) are available in 6 transparent colors: pink, orange, yellow, green, blue, and violet.



More general information:

Most containers are made of durable polystyrene plastic. The exceptions are the PerfectWestern-Dura (using proprietary flexible 'Dura' material; available in Small, Medium, Large, and Extra Large sizes), the black version of the Colosso (HDPE), the 2D Gel Staining Tray (polypropylene), and the OpaqueYellow 6-Sectional-ExtraLong (polypropylene).

For a real-size layout of all 37 sizes, see pages 5 and 6.

Give us Feedback: We are always designing new sizes, but if you need another PerfectWestern® container size or material that we do not currently offer, or have any other feedback, please let us know.

PerfectWestern® Rainbow Sets

4 sizes are available in 6 Rainbow colors!

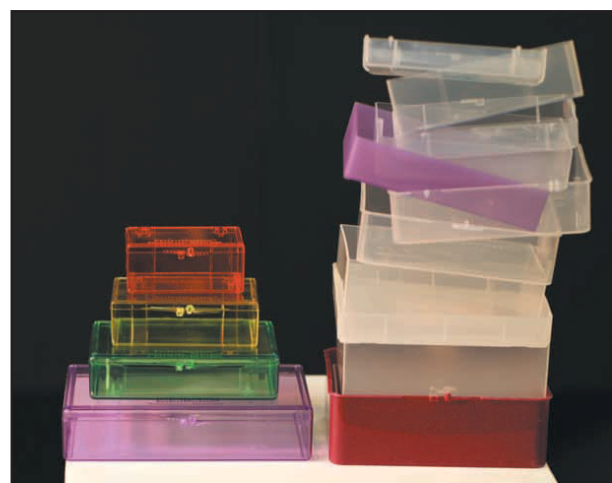
GenHunter offers 4 of our most popular container sizes (Small, Medium, Large, and Extra Large) in 6 different colors:

pink, orange, yellow, green, blue, and violet.

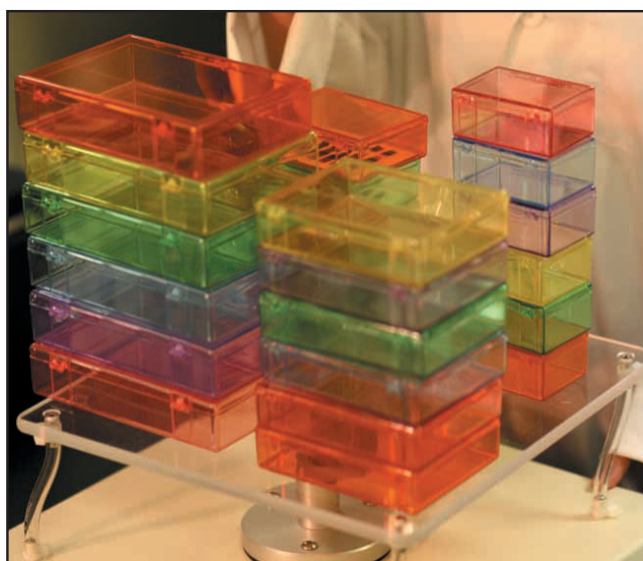
The containers are still transparent (see below) so blots are easily visible and the colors allow color-coding for organization or just for fun!



Medium, the most popular size, in all 6 colors



Organize your lab and save money



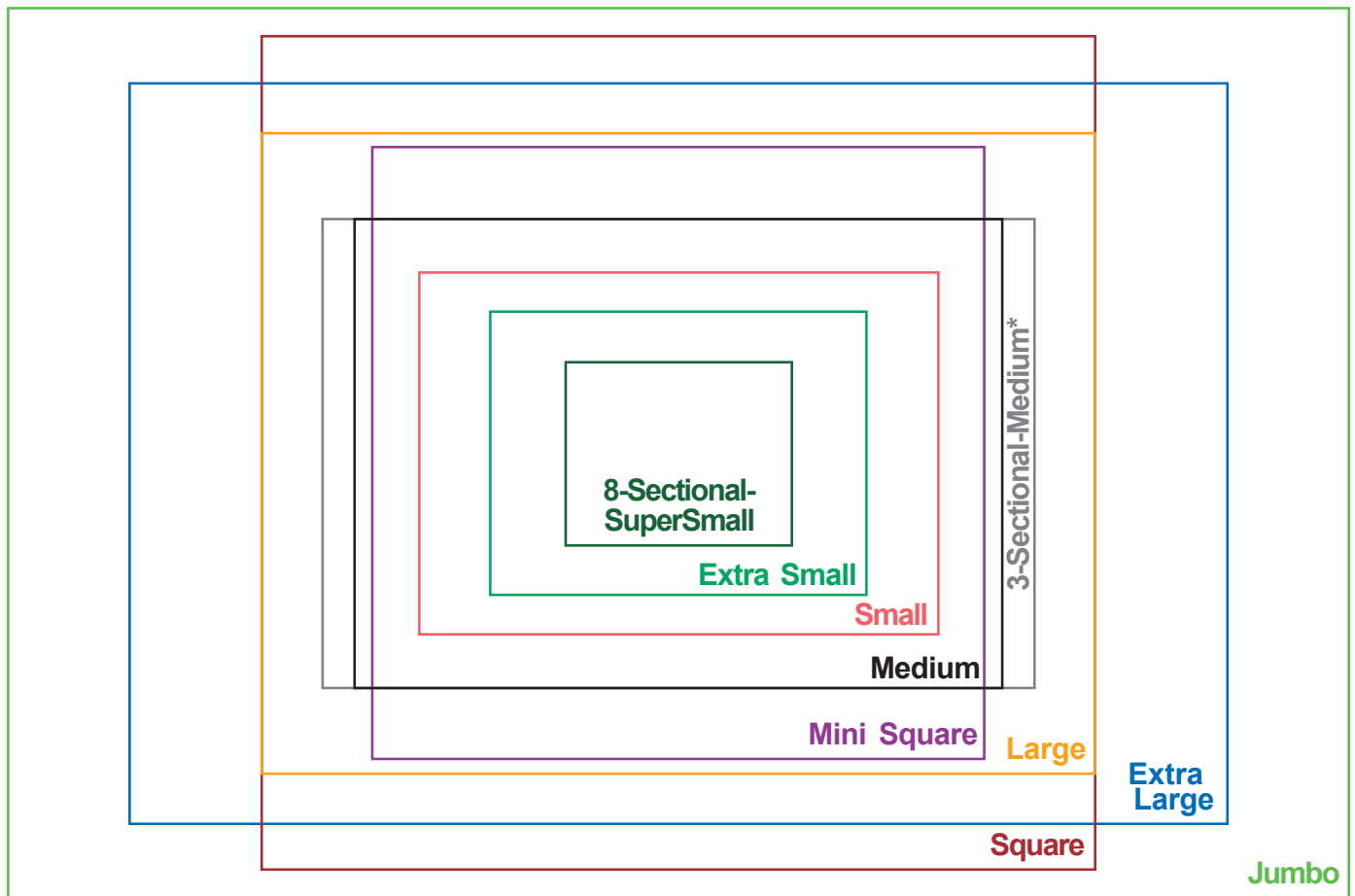
Small, Medium, Large, and Extra Large



Protein gel is still easily visible through the colored containers (violet shown)

Actual Sizes^{***} of our 37 P

14 RECTANGULAR CONTAINERS



* The □3-Sectional-Medium□ container (above) has 3 identical compartments, each 10 x 6.6 cm (3 15/16 x 2 5/8 inches), the same width and just slightly longer than the □Medium□ (most popular size).

Enormo

Important Note: Print pages at 100%. Do not fit to page.

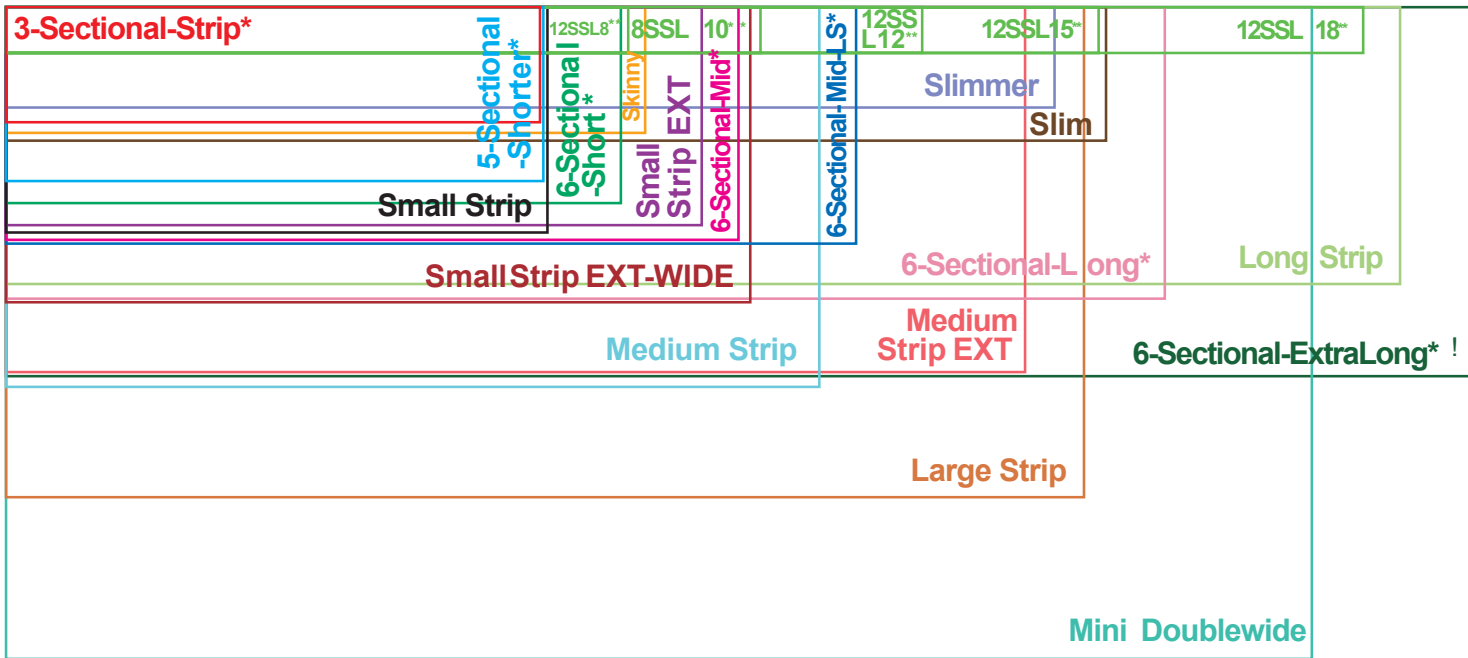
As a reference, □Jumbo□ should be 18.8 x 12.5 cm.

Call or email if you would like to receive an original printed catalog.

***** All sizes represented are container inside dimensions.**

PerfectWestern® Containers

23 CONTAINERS FOR STRIPS



* The 3-Sectional-Strip container has 3 identical compartments, each 7.3 x 1.6 cm (2 7/8 x 5/8 inches). The red box above only represents one of the compartments.

* The 5-Sectional-Shorter container has 5 identical compartments, each 7.3 x 2.4cm (2 7/8 x 15/16 inches). The blue box above only represents one of the compartments.

* The 6-Sectional-Short, -Mid, -Mid-LS, -Long, & -ExtraLong containers each have 6 identical compartments; boxes above only represent one of the compartments.

! The 6-Sectional-ExtraLong container's compartments are 21.3 x 5 cm.

** The new 8- and 12-Sectional-Skinny Trays are available in 5 different lengths (8.5, 10.3, 12.5, 14.9, and 18.4 cm). See page 7 for more info.

Important Note:

If printing pages, make sure to do so at 100% so these real-size layouts will be accurate. Do not fit to page !

Multi-Wide

Colosso
Black

2D Gel Staining Tray

Colosso
Clear

23 SIZES FOR STRIPS

PerfectWestern® Container	Clear Cat. No.	Black Cat. No.
3-Sectional-Strip	B106	B125
Skinny Strip	B170	B171
Small Strip	B113	B114
5-Sectional-Shorter	B154	B155
6-Sectional-Short	B130	B131
Small Strip EXT	B123	B124
Small Strip EXT-WIDE	B172	B173
6-Sectional-Mid	B132	B133
6-Sectional-Mid-LS	B150	B151
Medium Strip	B115	B116
Medium Strip EXT	B168	B169
Slimmer	B128	B129
Slim	B146	B147
6-Sectional-Long	B134	B135
Long Strip	B126	B127
6-Sectional-ExtraLong	B152	B153
Large Strip	B117	B118
Mini Doublewide	B136	B137

** 12SSL8, 8SSL10, 12SSL12, 12-SSL15, & 12SSL18 sizes

14 RECTANGULAR SIZES

PerfectWestern® Container	Clear Cat. No.	Black Cat. No.
8-Sectional-SuperSmall	B156	B157
Extra Small	B121	B122
Small #+%	B104	B105
Medium #+%	B101	B103
3-Sectional-Medium	B101-3S	B103-3S
Mini Square	B144	B145
Large #+%	B107	B108
Extra Large #+%	B109	B110
Square	B119	B120
Jumbo	B138	B139
Enormo	B111	B112
Multi-Wide	B148	B149
Colosso	B140	B141
2D Gel Staining Tray	B142	B143

These sizes also available in 6 transparent colors.

+ Also available in Thin version

% Also available in Dura version



GenHunter Corporation

624 Grassmere Park Dr, Ste. 17
Nashville, TN 37211 USA

Distributed by:

ImTec

DIAGNOSTICS NV

Contact us: info@imtec.be | 03-2251139

Brochure

