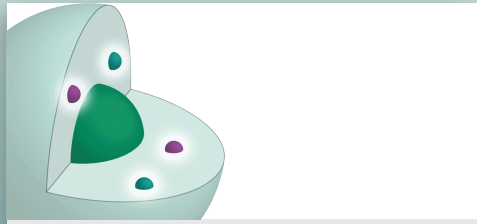
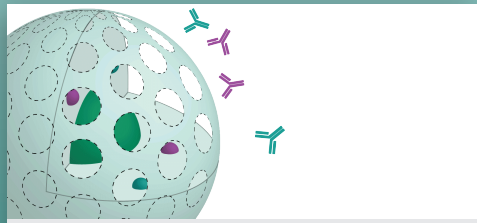


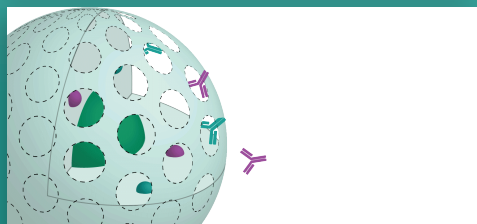
FIX&PERM[®] Cell Fixation and Permeabilization Kit



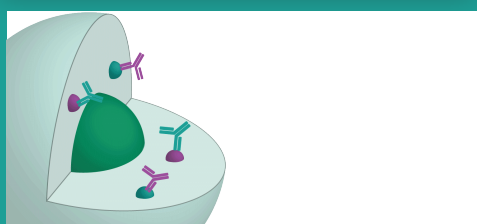
Reagent A gently fixes cells preserving their forward and side-scatter characteristics



Reagent B and labelled antibodies are then added



Reagent B permeabilizes the cell



Allowing binding and detection of intracellular antigens

FIX&PERM[®] is a simple procedure making use of two reagents. Reagent A gently fixes cells, while Reagent B permeabilizes them.

The specific formulation of FIX&PERM reduces background while allowing the simultaneous addition of permeabilization medium and fluorochrome labelled antibodies for staining of membrane proteins as well as intracellular components, such as cytoplasmic enzymes, nuclear proteins, oncoproteins, cytokines, immunoglobulins, and so on.

- Mildly fixes cells, preserving their flow cytometric scatter characteristics
- Allows simultaneous characterisation of both intracellular and cell surface markers
- Rapid technique – whole procedure can be carried out in less than one hour, ready for immediate analysis or storage for 24 hours
- Stringent QC procedures – the quality of each lot is determined using well-defined blood samples and subsequent comparison of immunostaining and scatter characteristics of obtained leukocyte populations, ensuring consistent and reliable results lot after lot
- A range of antibodies to intracellular and membrane antigens with optimised protocols for use with FIX&PERM[®]

Procedure

For each sample to be analysed use 50 µl of whole blood, bone marrow or mononuclear cell suspension in a 5 ml tube

Add 100 µl of Reagent A (Fixation Medium, stored and used at room temperature)

Incubate for 15 minutes at room temperature

Add 5 ml phosphate buffered saline and centrifuge cells for 5 minutes at 300 g

Remove supernatant and add to cell pellet 100 µl Reagent B and 20 µl of the appropriate monoclonal antibody

Vortex at low speed for 1-2 seconds

Incubate for 15 minutes at room temperature

Wash cells with PBS as above

Remove supernatant and resuspend cells in sheath fluid for immediate analysis

Alternatively, resuspend cells in 0.5 ml 1.0 % formaldehyde and store at 2-8°C in the dark.

Analyse cells within 24 hours

FIX&PERM[®] Cell Fixation and Permeabilization Kit

	Size	Cat. Number
Fix&PERM [®] Kit	2 x 20 mL	GAS-002
Fix&PERM [®] 1000 Kit	2 x 100 mL	GAS-002-1
Fix&PERM [®] Reagent A (Fix)	1 x 100 mL	GAS-002A-1
Fix&PERM [®] Reagent B (Perm)	1 x 100 mL	GAS-002B-1
Fix&PERM [®] Sample Kit	2 x 5 mL	GAS-002M

All FIX&PERM[®] kits are CE Marked

The majority of available monoclonal antibody conjugates can be used with FIX&PERM[®].

However, in some cases the fixation step may require optimization. Nordic-MUbio offers a number of mouse anti-human conjugated (PE/FITC) monoclonal antibodies pre-optimised for use with FIX&PERM[®].

Antigen	Isotype	Size	Cat. Number
CD3	IgG1	0.2 mg	GM-4011
		100 tests	GM-4012 (FITC)
		100 tests	GM-4013 (PE)
CD22	IgG1	0.2 mg	GM-4051
		100 tests	GM-4052 (FITC)
		100 tests	GM-4053 (PE)
MPO-C2	IgG1	0.2 mg	GM-4191
		100 tests	GM-4192 (FITC)
		100 tests	GM-4193 (PE)

Mouse anti-Human Combi Products

IgG Negative Control (FITC) and IgG Negative Control (PE)	GIC-201
Anti-Lysozyme (FITC) and anti-Lactoferrin (PE)	GIC-206
Anti-Myeloperoxidase-C2 (FITC) and anti-Lactoferrin (PE)	GIC-212
Anti-Myeloperoxidase-C2 (FITC) and anti-CD3 (PE)	GIC-213
Anti-Myeloperoxidase-C2 (FITC) and anti-CD22 (PE)	GIC-214